

SPOGOMI

Competition Rules

Participant Handbook

Team Name



SPOGOMI
WORLD CUP 2025



Trash Points

-100 points if the waste is not sorted properly.

Types and Points of Trash



Burnable trash
[Red 30L garbage bag]



Paper, Fabric, Magazines, Cardboard boxes, food wrappers, Plastic bags, etc.

※Not including: grass, fallen leaves, branches, yard waste, etc

100 g → 10 point
※Rounded off to the nearest 100g



Non-Burnable Trash
[Blue 30L garbage bag]



Vinyl umbrellas/ glass/ pots/ pans/ ceramics/ batteries/ lighters/ mirrors/ metals, etc.

※Small electrical appliances (e.g. hair dryer/shaver) are acceptable. Others are handled as bulky trash. Blocks and bricks are not included.

100 g → 10 point
※Rounded off to the nearest 100g



Glass Bottles/Aluminum Cans
[Red 30L garbage bag]

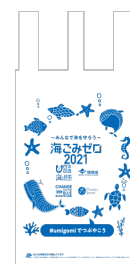


Containers made of glass and aluminum.

100 g → 12 point
※Rounded off to the nearest 100g



Plastic PET Bottles
[Blue 30L garbage bag]



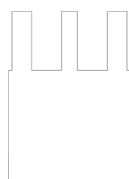
Plastic drink bottles, plastic drink cups, plastic takeout containers.



100 g → 25 point
※Rounded off to the nearest 100g



cigarette butts
[Translucent plastic bag]



Both factory-made, and hand-rolled varieties.

100 g → 200 point
※Rounded off to the nearest 100g



Banned Trash

Trash that will not fit into the trash bags to be distributed (700mm x 500mm = 30 liters),
Items that require special disposal methods, or pose safety risks when being handled (eg. fire extinguishers, rice cookers, tires, upholstery, sharp or biohazardous items, etc.).
Environmental items (eg. bricks, concrete, yard waste, sticks, etc.)

-100 point

Separation of Trash



Waste that can be burned :

Paper, Fabric, Magazines,
Cardboard boxes, Food
Wrappers, Plastic Bags, etc.



Glass Bottles/Aluminum Cans

Containers made of glass and
aluminum

No grass /leaves/household waste

No garbage larger than the size
of the garbage bag

Separation of Trash



Non-Burnable Trash :

Small umbrellas, plastic, glass, mirrors, pots & pans, batteries, ceramics, matches, lighters, razors, metal cutlery, small electronics



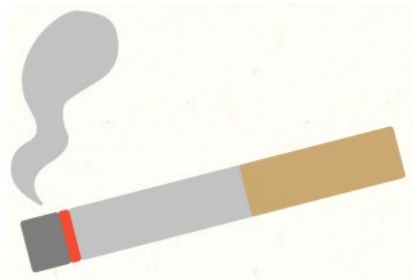
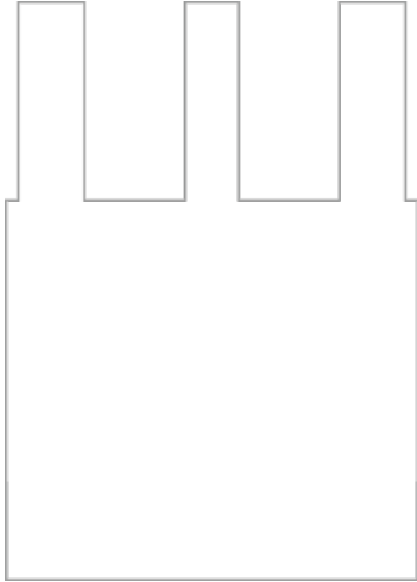
Plastic PET Bottle



Plastic drink bottles, plastic drink cups, plastic takeout containers

No electronics larger than the size of the bag

Separation of Trash



- Cigarette Butts Only
- Both factory-made, and hand-rolled varieties.

Please sort your trash carefully.

Because if the garbage is not placed according to the contents of the garbage bag, points will be deducted.

Basic Rules

1 team consists of 3 people

Each team will be supervised by one referee.

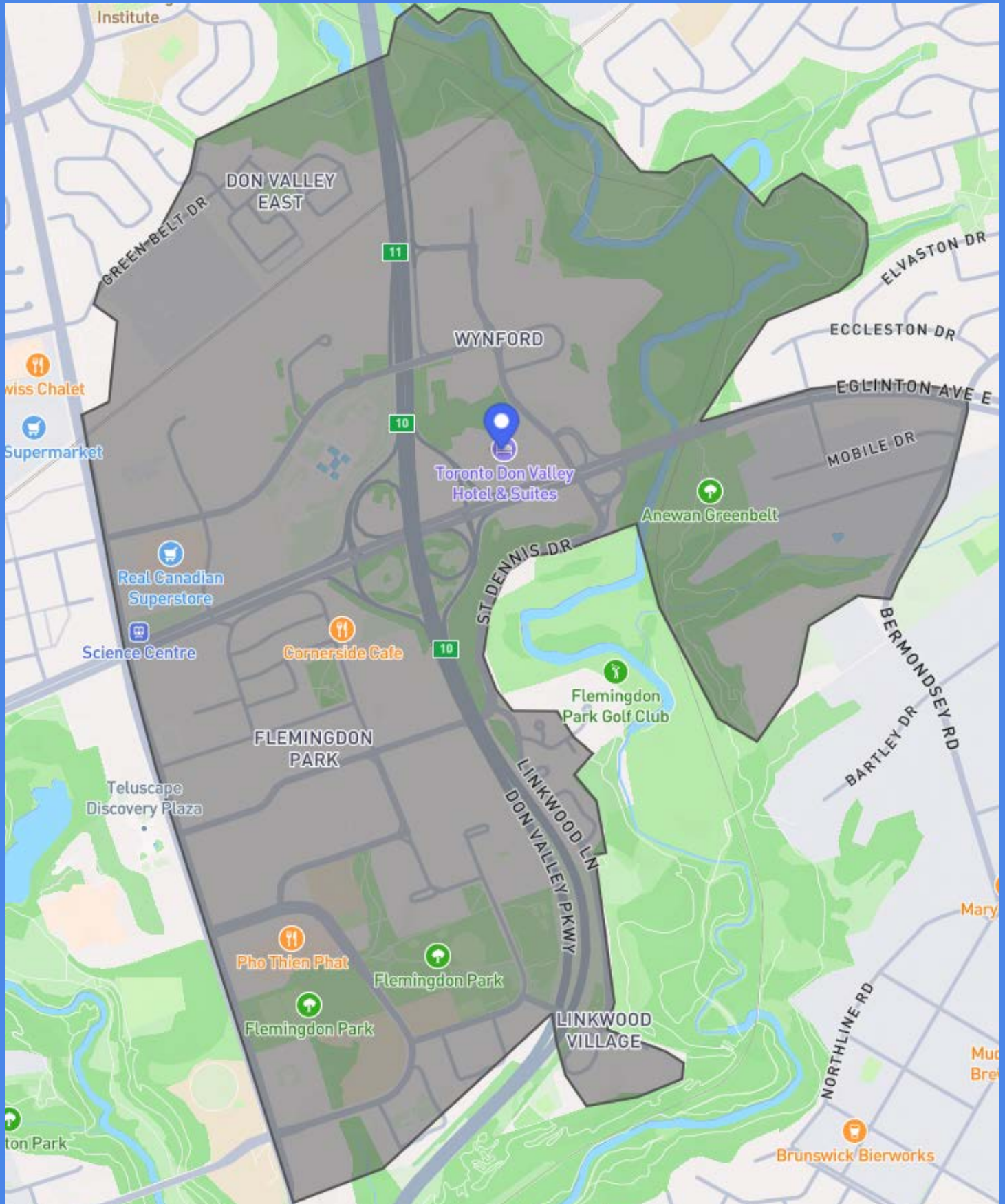
Please listen to the instructions and directions of the accompanying referee.

WARNINGS

Warnings

When participants break the rules and if they do not heed multiple warnings, points may be deducted until it results in disqualification.

The race must be within the designated area



Race Duration 1 Hour

Delay Points Deducted if Participants Do Not Return to the Finish Point on Time

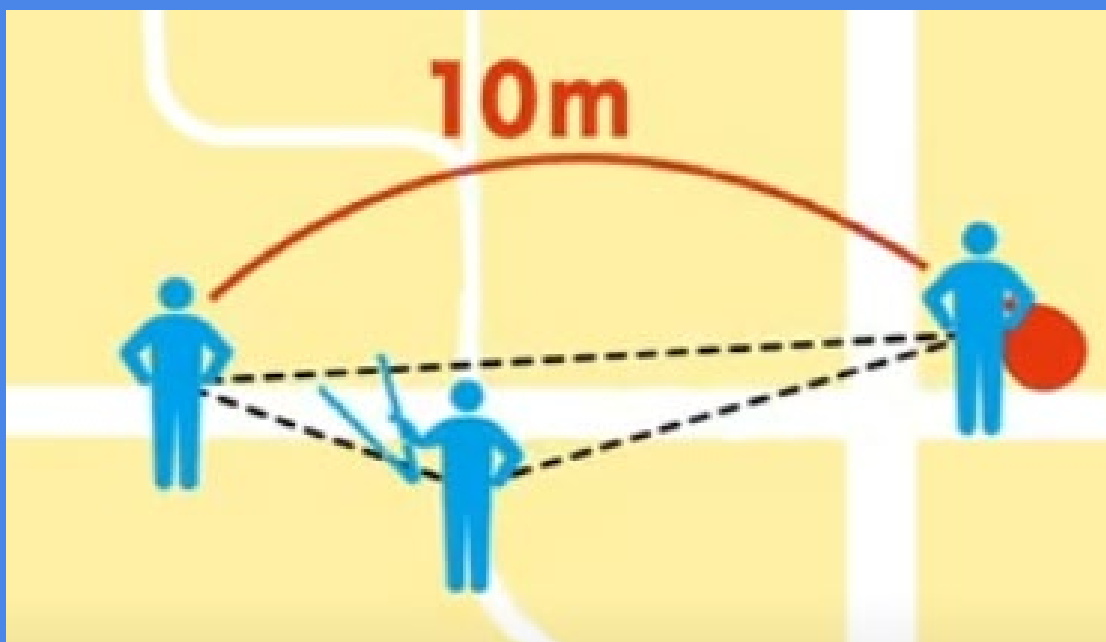
- Each passing 1 minute = -10 points
- Past 10 minutes = Disqualification



Working together as a Team

Must not be separated by 10 meters from other team members.

The team activity ends when the participating teams cross the finish line and report to the referees at the line.



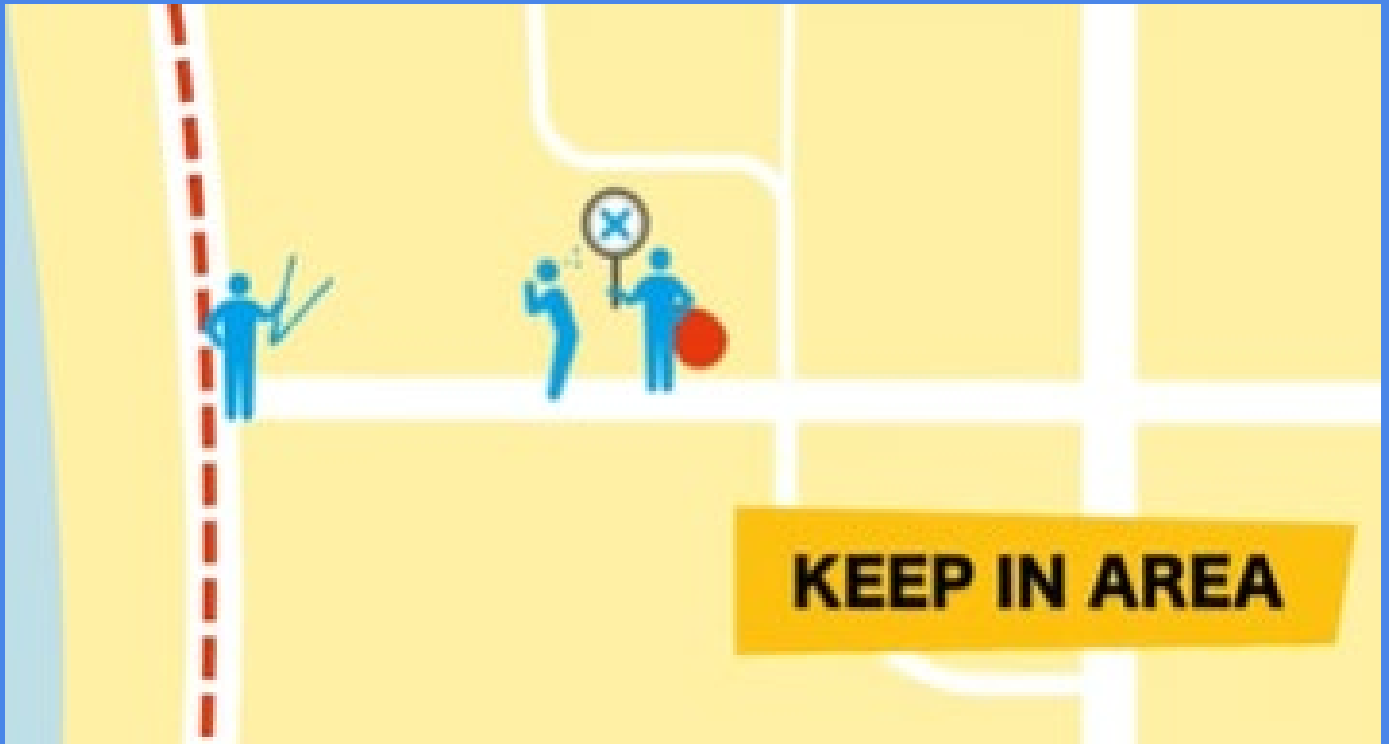
Do Not RUN



The team will be warned by the referee, and if the participant continues to run, **10 points will be deducted.**

**Walking is defined as (at least) one foot always on the ground. Running is faster, and has moments when both feet are off the ground.*

Keep competition area



&

Please do not damage the race
environment

**It is forbidden to pick up
garbage that is in the
garbage bins or in the
garbage collection points.**

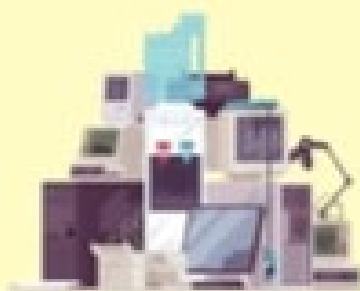
DO NOT PICKUP



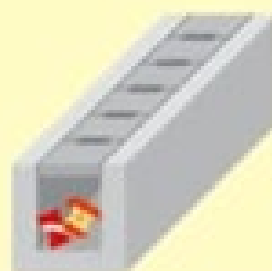
TRASH POINT



TRASH BOX



BULKY TRASH



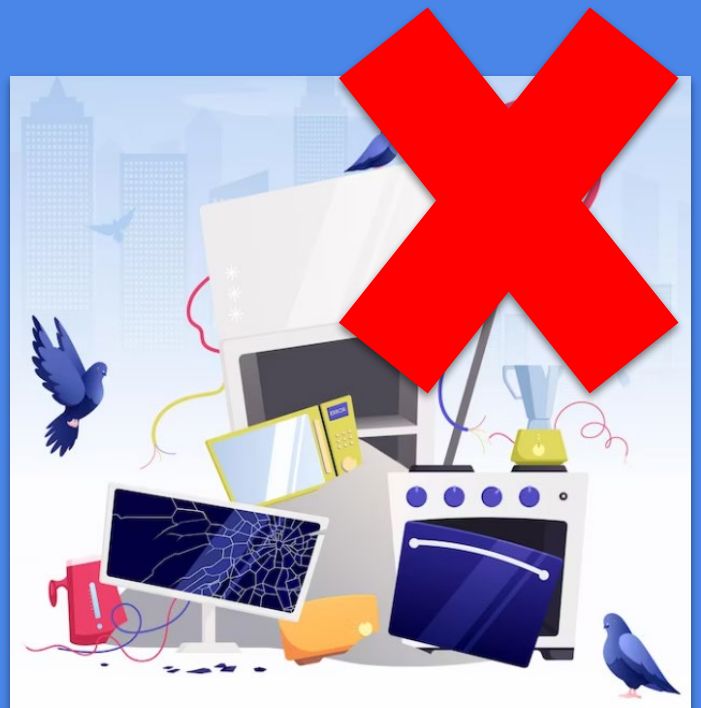
IN THE GUTTER

Do not pick up trash that is too big

Such as garbage that does not fit in a
competition-sized garbage bag

700 mm x 500 mm (30L)

Examples: fan /
battery / mattress
/ safe / iron rod /
TV / tire wheel /
baby carriage /
stove / computer



Maintain traffic rules

Participating teams will get points deducted and disqualified if they do not comply with traffic rules.



DISQUALIFICATION



Engaging in unsportsmanlike conduct



DISQUALIFICATION

**Not listening to
instructions or warnings
from staff/judges.**

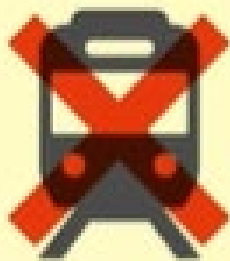


DISQUALIFICATION

Using tools, services, or travel devices instead of walking (excluding assisted mobility devices)

For example, public transportation/bus/taxi/bike/scooters, etc.

CASES OF DISQUALIFICATION



TRAIN



BUS



TAXI



BICYCLE

USE OF VEHICLES

DISQUALIFICATION

Intentionally increase the weight of waste

Such as collecting wet garbage /
garbage with water / adding
garbage from trash cans /
receiving garbage from shops /
houses, etc.



DISQUALIFICATION

Team returns late more than 10 minutes after the finish line

Calculated after passing the 1-hour time limit for the garbage picking competition.

CASES OF
DISQUALIFICATION

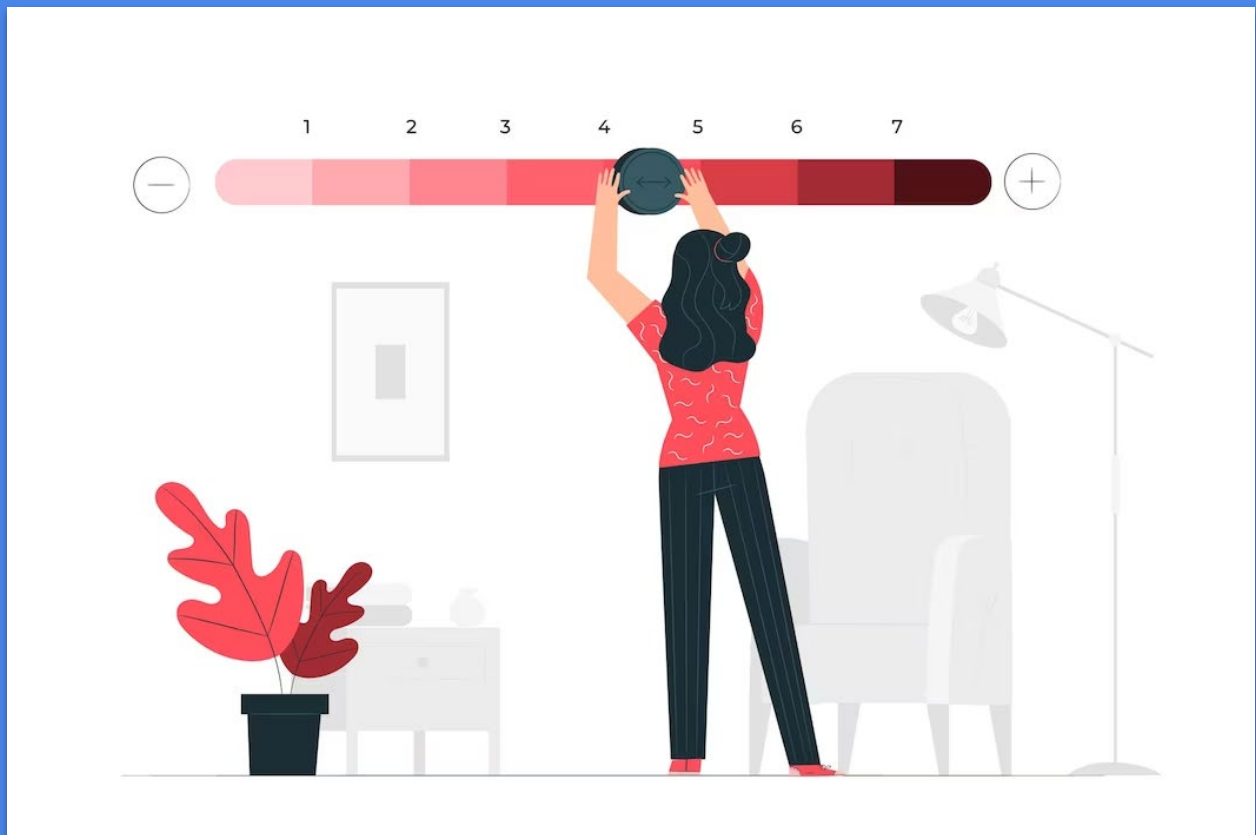


LATE MORE THAN 10 MINUTES

DISQUALIFICATION

Point Deduction case

POINT DEDUCTION



Team Returns too late

-10 points for every minute late
(counted from the starting second).
Disqualification if you are more than
10 minutes late.

Example of application:

- 10 points (first minute)
- 20 points (second minute),
etc



**-100 points if your team picks up
too big trash.**



Bulky waste is that which does not fit
into the provided garbage bags (700
mm x 500 mm / 30L)

-100 points for each improperly sorted item.



Weighting is performed again after the trash is re-seperated

-100 points for each item from Banned Trash location (as defined on previous pages).



Team name : _____

Total Trash Weight

burnable trash : _____

non-burnable Trash : _____

plastic bottle : _____

Bottle/Can : _____

cigarette butt : _____



SPOGOMI
WORLD CUP 2025

